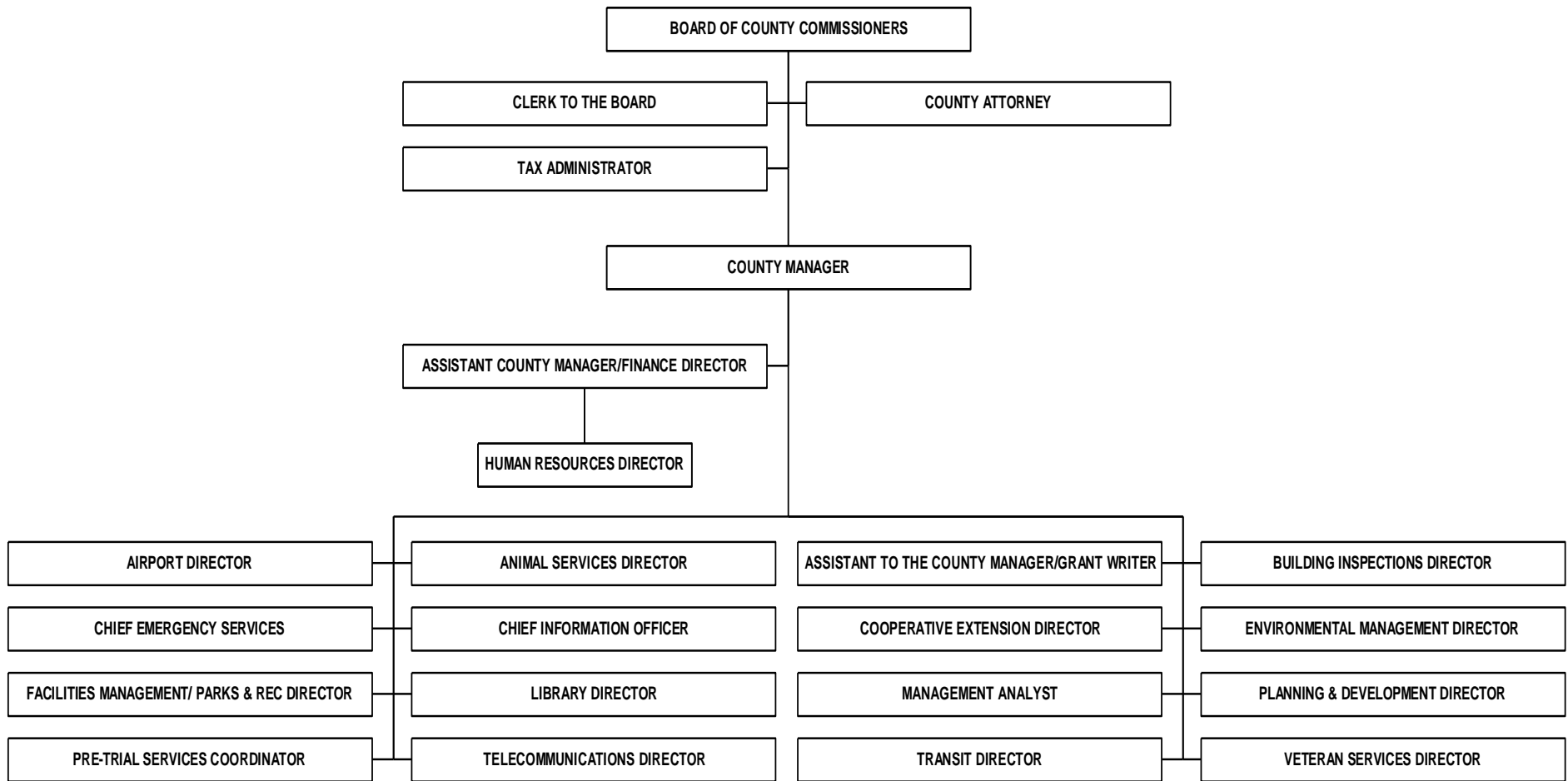


## County Administration Organizational Chart



### ADDITIONAL ADMINISTRATORS

- Sheriff (elected official)
- Register of Deeds (elected official)
- Elections Director (appointed by the State Board of Elections)
- Social Services Director (appointed by the County Board of Social Services)
- Public Health Director (appointed by the County Board of Health)
- Soil and Water Director (selected by the District Board of Supervisors)